










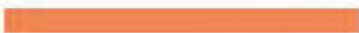


目录

红外事业部 | Infrared business department

可见光镜头 (Visible lens)		(1-2)
近红外镜头 (Near-Infrared Lens)		(3-5)
短波红外镜头 (short-Wave Infrared Lens)		(6-9)
中波红外镜头 (Middle-Wave Infrared lens)		(10-13)
长波红外镜头 (Long-Wave Infrared lens)		(14-69)
监控镜头		(14-25)
电动调焦镜头		(26-28)
瞄准镜		(29-36)
无热化镜头		(37-63)
广角镜头		(64-66)
模组镜头		(67-69)
连续变焦镜头		(70-73)

MARKETING NETWORK



行销网络

波长产品广泛分布在世界各地，如美国、韩国、欧洲、新加坡、台湾、以色列、土耳其、印度、泰国等。

在国内分别建立了南京研销中心、深圳、北京、武汉等办事处。

DESIGN

光学设计

波长红外事业部拥有专业的光学与机械设计团队，专注于近红外、短波红外、中波红外、长波红外和机器视觉光学系统的设计和开发工作，并为您专属订制服务，满足您特定领域的专业需求。

Full range of infrared optical lens design and producing, OEM lens processing, lens customization services, customer optoelectronic products supporting the design, producing, systems integration services

- 球面、非球面、衍射面、自由曲面光学及机械结构设计
- 微光夜视、近红外、短波红外、中波红外、长波红外光学系统及机械结构设计
- 机器视觉系统、工业镜头光学系统及机械结构设计
- 特殊领域高端光学系统定向设计开发
- 光学系统性能评估

Sphere Asphere DOE Free-surface and structure design

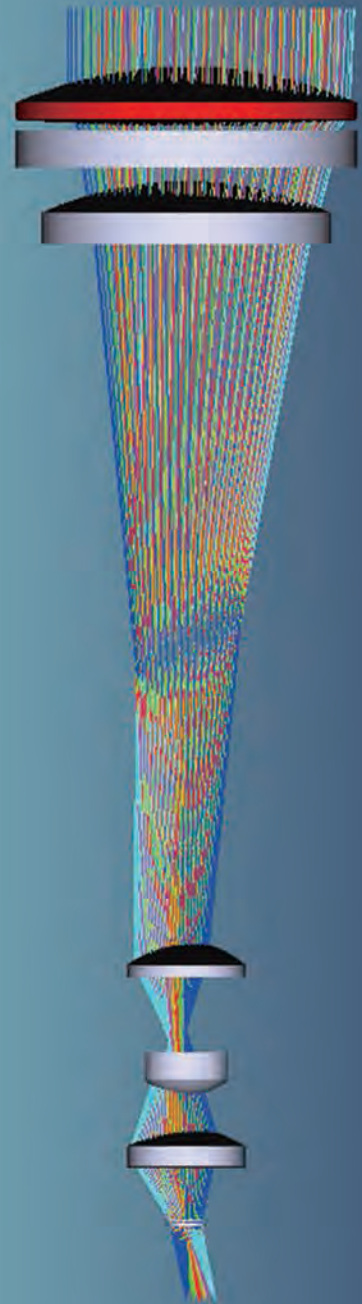
Night-vision NIR SWIR MWIR LWIR

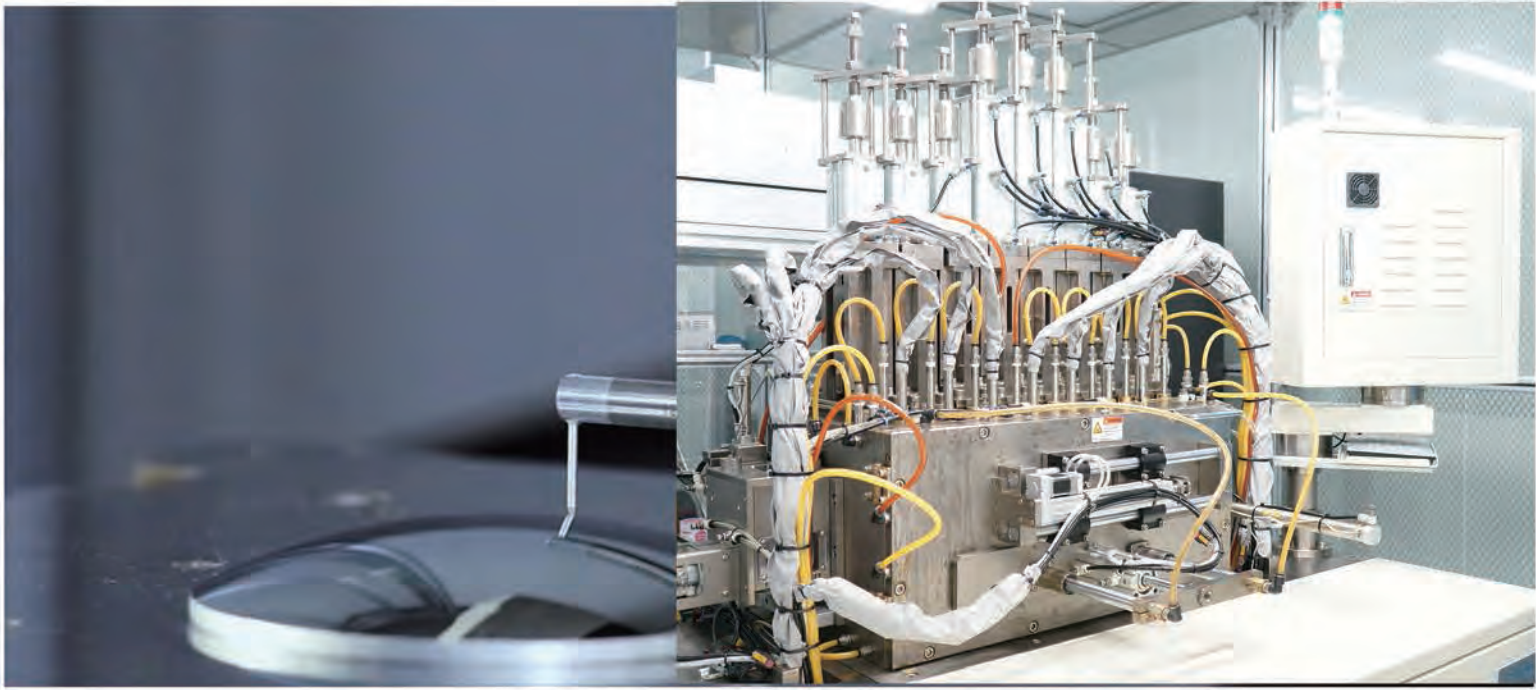
LWIR optics and structure design

Machine-vision system tech-lens optic system and structure design

High-optics design

Optics consultation





光学加工&模压镜头

可加工面型：

平面、各种球面、球罩、反射、非球面、自由曲面、衍射面等特殊曲面

Machinable lenses type

Plane, spherical surface, spherical cover, reflector, aspheric surface, diffraction surface, free-form surface ,etc..

可加工材料：

晶体材料 (Ge , ZnSe , ZnS, GaAs、Si、氟化物、硫系玻璃等) 塑料 (PMMA, PC等) ,

有色金属 (Cu, Al等) , 模芯材料玻璃/石英材料

Optics processing Material:

Crystal (Ge ZnSe GaAs Si Fluoride chalcogenide etc)

Plastic(PMMA,PC) Metal (Cu,Al) glass/fused silica

MACHINING



光学镀膜

红外材料镀膜指标

膜系说明及工作波段：

近紫外(NUV)波段光学薄膜 @190-370nm；

可见光(VS)波段光学薄膜 @380-780nm

近红外(NIR)和光通信波段光学薄膜 @780-2000nm

中远红外(MIR & FIR)波段光学薄膜 @2000-16000nm

激光(Laser)光学系统的光学薄膜 @10.6um, 1064nm, 532nm, 355nm etc.

膜系种类：

增透膜 (AR)，反射膜 (HR)，部分反射膜 (PR)，
偏振分光膜 (PBS)，消偏振分光膜 (NP-PBS)，
滤光膜 (Filter)、类金刚石膜 (DLC) 等。

Coating capacity:

NUV coating @ 190-370nm

VS coating @380-780nm

NIR coating @780-2000nm

MIR&FIR coating @2000-16000nm

Laser coating @10.6um 1064nm 532nm 355nm etc

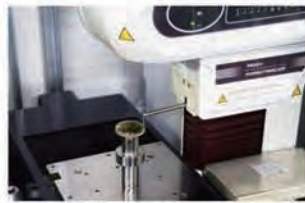
All coating types of anti-reflective high reflective
partial reflective NP-PBS Filter Diamondlike
carbon etc

COATING

质量检测保证

TESTING

波长红外事业部拥有进口的国际先进水平的各类检验设备多台，为元器件加工质量保驾护航，确保最终的产品质量达到要求，让客户放心。



Profilometer



CMM Coordinate Measuring



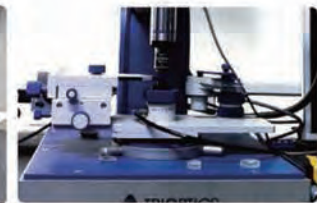
Zygo Interferometer



Spectrophotometer



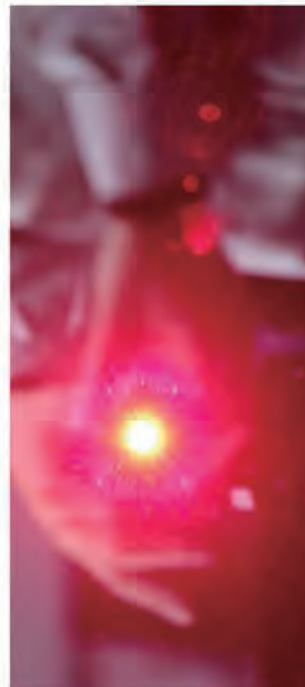
MTF Testing Station



Centering Station

Metrology

WOE Optics always invests the most reliable measuring equipment to strengthen our quality control capability. Through the years, WOE Optics employs quantitative measuring devices for every single production phase in order to strictly control our products quality no matter components or system level job. WOE Optics will continuously to improve and invest in metrology to deliver exact our customers' need. Our currently are equipped with Zygo interferometer, Mitutoyo profiler, Zeiss CMM coordinate measuring station, Trioptics MTF station, Trioptics centering station and so soon, our metrology lab covers almost all of our inspection need from what we produced.





装配能力

波长红外事业部拥有专门的万级洁净装配车间、百级超净装配工作台和装调测试设备，拥有10多年的光学系统装调经验，为各种光学系统提供精密装配。

Assembly

WOE assembly capabilities include rapid prototyping and custom-built and volume precise assembly of asphere, doublets, triplets, lens sub-assembly.

ASSEMBLING

可见光镜头



目镜 Eyepiece

VIS0253.6-E

焦距	Focal Length	25mm
光圈	F/#	3.6
视场角	Circular FOV	±21°(D)
出瞳直径	exit-pupil Diameter/diame	7mm
出瞳距	exit-pupil Distance	15mm
工作波段	Spectral Range	540-560nm
调焦方式	Focus Type	Manual Focus
后工作距离	BFL	31.75mm
接口类型	Mount Type	M28X0.75



物镜 Objective

VIS02010-O

焦距	Focal Length	20mm
光圈	F/#	1.0
视场角	Circular FOV	16.4°(H)X12.4°(V)
工作波段	Spectral Range	540-560nm
调焦方式	Focus Type	Manual Focus
后工作距离	BFL	CS-Mount
接口类型	Mount Type	

可见光镜头

物镜 Objective

VIS02514-O

焦距	Focal Length	25mm
光圈	F/#	1.4
视场角	Circular FOV	41.4°(D)
工作波段	Spectral Range	400-900nm
调焦方式	Focus Type	Manual Focus
后工作距离	BFL	12.5mm
接口类型	Mount Type	M28X0.75



VISIBLE LENS

2

efd

www.wave-optics.com

近红外镜头



Apply To Near-Wave Infrared Detector (900-1700nm)

LSW12.514

焦距	Focal Length	12.5mm
光圈	F/#	1.4-16
视场角	Circular FOV	37° (D)
工作波段	Spectral Range	900-1700nm
调焦方式	Focus Type	Manual Focus
后工作距离	BFL	C-Mount
接口类型	Mount Type	
探测器	Detector	CCD-12.5um



Apply To Near-Wave Infrared Detector (900-1700nm)

LSW017206000

焦距	Focal Length	17mm
光圈	F/#	2.0
视场角	Circular FOV	79.2° (D)
工作波段	Spectral Range	900-1700nm
调焦方式	Focus Type	Manual Focus
后工作距离	BFL	F-Bayonet
接口类型	Mount Type	
探测器	Detector	6000X4000-3.9um

近红外镜头

Apply To Near-Wave Infrared Detector (900-1700nm)

LSW05014640

焦距	Focal Length	50mm
光圈	F/#	1.4
视场角	Circular FOV	22.6° (D)
工作波段	Spectral Range	900-1700nm
调焦方式	Focus Type	Fixed Focus
后工作距离	BFL	21.8
接口类型	Mount Type	M37X0.5
探测器	Detector	640X480-25um



NEAR-INFRARED

4

Apply To Near-Wave Infrared Detector (900-1700nm)

LSW07515640

焦距	Focal Length	75mm
光圈	F/#	1.5
视场角	Circular FOV	15.2° (D)
工作波段	Spectral Range	900-1700nm
调焦方式	Focus Type	Manual Focus
后工作距离	BFL	C-Mount
接口类型	Mount Type	
探测器	Detector	640X480-25um





近红外镜头

Apply To Near-Wave Infrared Detector (900-1700nm)

LSW10020640

焦距	Focal Length	100mm
光圈	F/#	2.0
视场角	Circular FOV	11.4° (D)
工作波段	Spectral Range	900-1700nm
调焦方式	Focus Type	Manual Focus
后工作距离	BFL	C-Mount
接口类型	Mount Type	
探测器	Detector	640X480-25um



Apply To Near-Wave Infrared Detector (900-1700nm)

LSW20020640

焦距	Focal Length	200mm
光圈	F/#	2.0
视场角	Circular FOV	5.7° (D)
工作波段	Spectral Range	900-1700nm
调焦方式	Focus Type	Manual Focus
后工作距离	BFL	17.5
接口类型	Mount Type	M30X1
探测器	Detector	640X480-25um

短波红外镜头

Apply To Short-Wave Infrared Detector (1-3um)

Infra-SW0123.0-15

焦距	Focal Length	12mm
光圈	F/#	3.0
视场角	Circular FOV	54° (D)
工作波段	Spectral Range	1.5-5um
调焦方式	Focus Type	Manual Focus
后工作距离	BFL	39.4mm
接口类型	Mount Type	Bayonet
探测器	Detector	640X512-15um



Apply To Short-Wave Infrared Detector (1-3um)

Infra-SW232.0-30

焦距	Focal Length	23mm
光圈	F/#	2.0
视场角	Circular FOV	30° (D)
工作波段	Spectral Range	900-2300nm
调焦方式	Focus Type	Manual Focus
后工作距离	BFL	C-Mount
接口类型	Mount Type	
探测器	Detector	320X256-30um





短波红外镜头

Apply To Short-Wave Infrared Detector (1-3um)

Infra-SW252.5-30

焦距	Focal Length	25mm
光圈	F/#	2.5
视场角	Circular FOV	26° (D)
工作波段	Spectral Range	900-2500nm
调焦方式	Focus Type	Manual Focus
后工作距离	BFL	C-Mount
接口类型	Mount Type	
探测器	Detector	320X256-30um



Apply To Short-Wave Infrared Detector (1-3um)

Infra-SW253.0-17

焦距	Focal Length	25mm
光圈	F/#	3.0
视场角	Circular FOV	47° (D)
工作波段	Spectral Range	1.5-5um
调焦方式	Focus Type	Manual Focus
后工作距离	BFL	39.4mm
接口类型	Mount Type	Bayonet
探测器	Detector	1024X768-17um

短波红外镜头

Apply To Short-Wave Infrared Detector ($\lambda < 3\mu\text{m}$)

Infra-SW352.0-30

焦距	Focal Length	35mm
光圈	F/#	2.0
视场角	Circular FOV	20° (D)
工作波段	Spectral Range	900-2500nm
调焦方式	Focus Type	Manual Focus
后工作距离	BFL	C-Mount
接口类型	Mount Type	
探测器	Detector	320X256-30um



Apply To Short Wave Infrared Detector ($\lambda < 3\mu\text{m}$)

Infra-SW502.0-30

焦距	Focal Length	50mm
光圈	F/#	2.0
视场角	Circular FOV	14° (D)
工作波段	Spectral Range	900-2500nm
调焦方式	Focus Type	Manual Focus
后工作距离	BFL	C-Mount
接口类型	Mount Type	
探测器	Detector	320X256-30um





短波红外镜头

Apply To Short-Wave Infrared Detector (1-3um)

Infra-SW502.3-17

焦距	Focal Length	50mm
光圈	F/#	2.3
视场角	Circular FOV	24.5° (D)
工作波段	Spectral Range	1.5-5um
调焦方式	Focus Type	Manual Focus
后工作距离	BFL	39.4mm
接口类型	Mount Type	Bayonet
探测器	Detector	1024X768-17um

Apply To Short-Wave Infrared Detector (1-3um)

Infra-SW1002.3-17

焦距	Focal Length	100mm
光圈	F/#	2.3
视场角	Circular FOV	12.4° (D)
工作波段	Spectral Range	1.5-5um
调焦方式	Focus Type	Manual Focus
后工作距离	BFL	39.4mm
接口类型	Mount Type	Bayonet
探测器	Detector	1024X768-17um



中波红外镜头

Apply To Middle-Wave Infrared Detector (3-5um)

Infra-MW252.0-15

焦距	Focal Length	25mm
光圈	F/#	2.0
视场角	Circular FOV	27.6° (D)
工作波段	Spectral Range	3-5um
冷屏尺寸	Cold Stop Size	9.7mm
冷屏位置	Cold Stop Position	19.45mm
调焦方式	Focus Type	Manual Focus
后工作距离	BFL	29.6mm
接口类型	Mount Type	M32X1
探测器	Detector	640X512-15um



Apply To Middle-Wave Infrared Detector (3-5um)

Infra-MW502.0-15

焦距	Focal Length	50mm
光圈	F/#	2.0
视场角	Circular FOV	14° (D)
工作波段	Spectral Range	3-5um
冷屏尺寸	Cold Stop Size	9.7mm
冷屏位置	Cold Stop Position	19.45mm
调焦方式	Focus Type	Manual Focus
后工作距离	BFL	28.4mm
接口类型	Mount Type	M36X1
探测器	Detector	640X512-15um



中波红外镜头

Apply To Middle-Wave Infrared Detector (3-5um)



Infra-MW702.0640-15

焦距	Focal Length	70mm
光圈	F/#	2.0
视场角	Circular FOV	9.3° (D)
工作波段	Spectral Range	3.7-4.8um
冷屏尺寸	Cold Stop Size	9.7mm
冷屏位置	Cold Stop Position	19.45mm
调焦方式	Focus Type	Manual Focus
后工作距离	BFL	47.5mm
接口类型	Mount Type	M60X1/Flange
探测器	Detector	640X512-15um

Apply To Middle-Wave Infrared Detector (3-5um)



Infra-MW1002.0-15

焦距	Focal Length	100mm
光圈	F/#	2.0
视场角	Circular FOV	7° (D)
工作波段	Spectral Range	3-5um
冷屏尺寸	Cold Stop Size	9.7mm
冷屏位置	Cold Stop Position	19.45mm
调焦方式	Focus Type	Manual Focus
后工作距离	BFL	30.64mm
接口类型	Mount Type	M50x1
探测器	Detector	640X512-15um

中波红外镜头

Apply To Middle-Wave Infrared Detector (3-5um)

Infra-MW1002.0-24

焦距	Focal Length	100mm
光圈	F/#	2.0
视场角	Circular FOV	11° (D)
工作波段	Spectral Range	3-5um
冷屏尺寸	Cold Stop Size	12.9mm
冷屏位置	Cold Stop Position	25.47mm
调焦方式	Focus Type	Manual Focus
后工作距离	BFL	55.74mm
接口类型	Mount Type	Flange
探测器	Detector	640X512-24um



Apply To Middle-Wave Infrared Detector (3-5um)

Infra-MW2002.0-15C

焦距	Focal Length	200mm
光圈	F/#	2.0
视场角	Circular FOV	3.5° (D)
工作波段	Spectral Range	3-5um
冷屏尺寸	Cold Stop Size	9.7mm
冷屏位置	Cold Stop Position	19.45mm
调焦方式	Focus Type	Manual Focus
后工作距离	BFL	C-Mount
接口类型	Mount Type	
探测器	Detector	640X512-15um



中波红外镜头

Apply To Middle-Wave Infrared Detector (3-5um)

Infra-MW2502.3-15

焦距	Focal Length	250mm
光圈	F/#	2.3
视场角	Circular FOV	5.6° (D)
工作波段	Spectral Range	3-5um
冷屏尺寸	Cold Stop Size	9.7mm
冷屏位置	Cold Stop Position	19.4mm
调焦方式	Focus Type	Manual Focus
后工作距离	BFL	C-Mount
接口类型	Mount Type	
探测器	Detector	640X512-15um

长波红外-监控镜头

Apply To Long-Wave Infrared Uncooled Detector

LIR07.510640-17

焦距	Focal Length	7.5mm
光圈	F/#	1.0
视场角	Circular FOV	71.9° (H) X57° (V)
工作波段	Spectral Range	8-12um
调焦方式	Focus Type	Manual Focus
后工作距离	BFL	16mm
接口类型	Mount Type	M34X0.75
探测器	Detector	640X480-17um



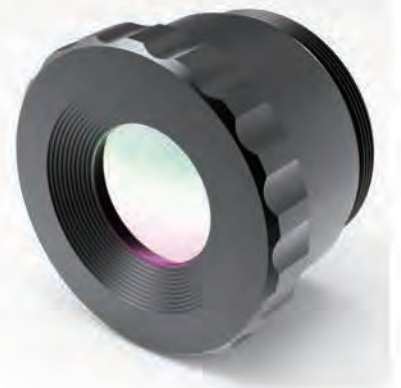
LONG WAVE INFRARED

14

Apply To Long-Wave Infrared Uncooled Detector

LIR08.510640-17

焦距	Focal Length	8.5mm
光圈	F/#	1.0
视场角	Circular FOV	65.2° (H) X51.2° (V)
工作波段	Spectral Range	8-12um
调焦方式	Focus Type	Manual Focus
后工作距离	BFL	17.6mm
接口类型	Mount Type	M34X0.5
探测器	Detector	640X480-17um



efid

www.wave-optics.com

长波红外-监控镜头



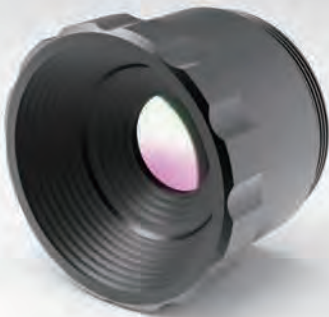
Apply To Long-Wave Infrared Uncooled Detector

LIR01010384-17

焦距	Focal Length	10mm
光圈	F/#	1.0
视场角	Circular FOV	36° (H) X27.5° (V)
工作波段	Spectral Range	8-12um
调焦方式	Focus Type	Manual Focus
后工作距离	BFL	13.5mm
接口类型	Mount Type	M34X0.75
探测器	Detector	384X288-17um

Apply To Long-Wave Infrared Uncooled Detector

LIR01110160-17



焦距	Focal Length	11mm
光圈	F/#	1.0
视场角	Circular FOV	20° (H) X15° (V)
工作波段	Spectral Range	8-12um
调焦方式	Focus Type	Manual Focus
后工作距离	BFL	17.5mm
接口类型	Mount Type	M30X0.75
探测器	Detector	160X120-17um

长波红外-监控镜头

Apply To Long-Wave Infrared Uncooled Detector

LIR01110640-17

焦距	Focal Length	11mm
光圈	F/#	1.0
视场角	Circular FOV	49.9° (H) X 38.4° (V)
工作波段	Spectral Range	8-12um
调焦方式	Focus Type	Manual Focus
后工作距离	BFL	16mm
接口类型	Mount Type	M34X0.75
探测器	Detector	640X480-17um



LONG WAVE INFRARED

16

Apply To Long-Wave Infrared Uncooled Detector

LIR01312320-17

焦距	Focal Length	13mm
光圈	F/#	1.2
视场角	Circular FOV	23.6° (H) X 17.8° (V)
工作波段	Spectral Range	8-12um
调焦方式	Focus Type	Manual Focus
后工作距离	BFL	17.6mm
接口类型	Mount Type	M34X0.5
探测器	Detector	320X240-17um



efid

www.wave-optics.com



长波红外-监控镜头

Apply To Long-Wave Infrared Uncooled Detector

LIR01510640-17

焦距	Focal Length	15mm
光圈	F/#	1.0
视场角	Circular FOV	39.8° (H) X30.4° (V)
工作波段	Spectral Range	8-12um
调焦方式	Focus Type	Manual Focus
后工作距离	BFL	16mm
接口类型	Mount Type	M34X0.75
探测器	Detector	640X480-17um



Apply To Long-Wave Infrared Uncooled Detector

LIR01810640-17

焦距	Focal Length	18mm
光圈	F/#	1.0
视场角	Circular FOV	33.6° (H) X25.5° (V)
工作波段	Spectral Range	8-12um
调焦方式	Focus Type	Manual Focus
后工作距离	BFL	16mm
接口类型	Mount Type	M34X0.75
探测器	Detector	640X480-17um

长波红外-监控镜头

Apply To Long-Wave Infrared Uncooled Detector

LIR01910640-17

焦距	Focal Length	19mm
光圈	F/#	1.0
视场角	Circular FOV	31.9° (H) X24° (V)
工作波段	Spectral Range	8-12um
调焦方式	Focus Type	Manual Focus
后工作距离	BFL	16mm
接口类型	Mount Type	M34X0.75
探测器	Detector	640X480-17um



Apply To Long-Wave Infrared Uncooled Detector

LIR02010640-17

焦距	Focal Length	20mm
光圈	F/#	1.0
视场角	Circular FOV	30.4° (H) X23° (V)
工作波段	Spectral Range	8-12um
调焦方式	Focus Type	Manual Focus
后工作距离	BFL	13.3mm
接口类型	Mount Type	M34X0.75
探测器	Detector	640X480-17um



长波红外-监控镜头

Apply To Long-Wave Infrared Uncooled Detector

LIR022.610384-17

焦距	Focal Length	22.6mm
光圈	F/#	1.0
视场角	Circular FOV	16.4° (H) X 12.3° (V)
工作波段	Spectral Range	8-12um
调焦方式	Focus Type	Manual Focus
后工作距离	BFL	13.5mm
接口类型	Mount Type	M34X0.75
探测器	Detector	384X288-17um

Apply To Long-Wave Infrared Uncooled Detector

LIR02510640-17

焦距	Focal Length	25mm
光圈	F/#	1.0
视场角	Circular FOV	24.5° (H) X 18.5° (V)
工作波段	Spectral Range	8-12um
调焦方式	Focus Type	Manual / Motorized
后工作距离	BFL	16mm
接口类型	Mount Type	M34X0.75/M45X1
探测器	Detector	640X480-17um

长波红外-监控镜头

Apply To Long-Wave Infrared Uncooled Detector

LIR02511640-17

焦距	Focal Length	25mm
光圈	F/#	1.1
视场角	Circular FOV	24.5° (H) X18.5° (V)
工作波段	Spectral Range	8-12um
调焦方式	Focus Type	Manual Focus
后工作距离	BFL	16mm
接口类型	Mount Type	M34X0.75
探测器	Detector	640X480-17um

Apply To Long-Wave Infrared Uncooled Detector

LIR02612320-17

焦距	Focal Length	26mm
光圈	F/#	1.2
视场角	Circular FOV	11.9° (H) X8.9° (V)
工作波段	Spectral Range	8-12um
调焦方式	Focus Type	Manual /Motorized
后工作距离	BFL	17.6mm/17.3mm
接口类型	Mount Type	M34X0.5/Flange
探测器	Detector	320X240-17um

长波红外-监控镜头

Apply To Long-Wave Infrared Uncooled Detector

LIR03010640-17



焦距	Focal Length	30mm
光圈	F/#	1.0
视场角	Circular FOV	20.5° (H) X15.4° (V)
工作波段	Spectral Range	8-12um
调焦方式	Focus Type	Manual /Motorized
后工作距离	BFL	18.22mm
接口类型	Mount Type	M34X0.5
探测器	Detector	640X480-17um

Apply To Long-Wave Infrared Uncooled Detector

LIR03510640-17



焦距	Focal Length	35mm
光圈	F/#	1.0
视场角	Circular FOV	17.6° (H) X13.2° (V)
工作波段	Spectral Range	8-12um
调焦方式	Focus Type	Manual Focus
后工作距离	BFL	16mm
接口类型	Mount Type	M34X0.75
探测器	Detector	640X480-17um

长波红外-监控镜头

Apply To Long-Wave Infrared Uncooled Detector

LIR04010640-17

焦距	Focal Length	40mm
光圈	F/#	1.0
视场角	Circular FOV	15.4° (H) X 11.6° (V)
工作波段	Spectral Range	8-12um
调焦方式	Focus Type	Manual / Motorized
后工作距离	BFL	18.22mm
接口类型	Mount Type	M34X0.5
探测器	Detector	640X480-17um



LONG WAVE INFRARED

22

Apply To Long-Wave Infrared Uncooled Detector

LIR04210640-17

焦距	Focal Length	42mm
光圈	F/#	1.0
视场角	Circular FOV	14.7° (H) X 11° (V)
工作波段	Spectral Range	8-12um
调焦方式	Focus Type	Manual Focus
后工作距离	BFL	17.4mm
接口类型	Mount Type	M38X1
探测器	Detector	640X480-17um



efid

www.wave-optics.com



长波红外-监控镜头

Apply To Long-Wave Infrared Uncooled Detector

LIR05010640-17

焦距	Focal Length	50mm
光圈	F/#	1.0
视场角	Circular FOV	12.4° (H) X 9.3° (V)
工作波段	Spectral Range	8-12um
调焦方式	Focus Type	Manual / Motorized
后工作距离	BFL	18.22mm
接口类型	Mount Type	M34X0.5/M45X1
探测器	Detector	640X480-17um



Apply To Long-Wave Infrared Uncooled Detector

LIR0500.81024-17

焦距	Focal Length	50mm
光圈	F/#	0.8
视场角	Circular FOV	19.7° (H) X 14.8° (V)
工作波段	Spectral Range	8-12um
调焦方式	Focus Type	Manual Focus
后工作距离	BFL	20mm
接口类型	Mount Type	M55X1
探测器	Detector	1024X768-17um

长波红外-监控镜头

Apply To Long-Wave Infrared Uncooled Detector

LIR06010640-17

焦距	Focal Length	60mm
光圈	F/#	1.0
视场角	Circular FOV	10.3°(H) X 7.7°(V)
工作波段	Spectral Range	8-12um
调焦方式	Focus Type	Manual Focus
后工作距离	BFL	16mm
接口类型	Mount Type	M34X0.75
探测器	Detector	640X480-17um



LONG WAVE INFRARED

24

Apply To Long-Wave Infrared Uncooled Detector

LIR07010640-17

焦距	Focal Length	70mm
光圈	F/#	1.0
视场角	Circular FOV	8.8°(H) X 6.6°(V)
工作波段	Spectral Range	8-12um
调焦方式	Focus Type	Manual/Motorized
后工作距离	BFL	18.22mm
接口类型	Mount Type	M34X0.5
探测器	Detector	640X480-17um



efid

www.wave-optics.com



长波红外-监控镜头

Apply To Long-Wave Infrared Uncooled Detector

LIR07510640-17

焦距	Focal Length	75mm
光圈	F/#	1.0
视场角	Circular FOV	8.2° (H) X6.2° (V)
工作波段	Spectral Range	8-12um
调焦方式	Focus Type	Manual/Motorized
后工作距离	BFL	16mm
接口类型	Mount Type	M34X0.75/M45X1
探测器	Detector	640X480-17um

Apply To Long-Wave Infrared Uncooled Detector

LIR10010640-17



焦距	Focal Length	100mm
光圈	F/#	1.0
视场角	Circular FOV	6.2° (H) X4.6° (V)
工作波段	Spectral Range	8-12um
调焦方式	Focus Type	Manual/Motorized
后工作距离	BFL	16mm
接口类型	Mount Type	M34X0.75/M45X1
探测器	Detector	640X480-17um

长波红外-电调镜头

Apply To Long-Wave Infrared Uncooled Detector

LIR025F1.0-640-17

焦距	Focal Length	25mm
光圈	F/#	1.0
视场角	Circular FOV	24.5° (H) X 18.5° (V)
工作波段	Spectral Range	8-12um
调焦方式	Focus Type	Motorized
后工作距离	BFL	16mm
接口类型	Mount Type	M45X1
探测器	Detector	640X480-17um

Apply To Long-Wave Infrared Uncooled Detector

LIR030F1.0-640-17

焦距	Focal Length	30mm
光圈	F/#	1.0
视场角	Circular FOV	20.5° (H) X 15.4° (V)
工作波段	Spectral Range	8-12um
调焦方式	Focus Type	Motorized
后工作距离	BFL	18.22mm
接口类型	Mount Type	M34X0.5
探测器	Detector	640X480-17um

长波红外-电调镜头

Apply To Long-Wave Infrared Uncooled Detector

LIR050F1.0-640-17

焦距	Focal Length	50mm
光圈	F/#	1.0
视场角	Circular FOV	12.4° (H) X 9.3° (V)
工作波段	Spectral Range	8-12um
调焦方式	Focus Type	Motorized
后工作距离	BFL	18.22mm
接口类型	Mount Type	M34X0.5/M45X1
探测器	Detector	640X480-17um

Apply To Long-Wave Infrared Uncooled Detector

LIR075F1.0-640-17

焦距	Focal Length	75mm
光圈	F/#	1.0
视场角	Circular FOV	8.2° (H) X 6.2° (V)
工作波段	Spectral Range	8-12um
调焦方式	Focus Type	Motorized
后工作距离	BFL	16mm
接口类型	Mount Type	M45X1
探测器	Detector	640X480-17um

长波红外-电调镜头

Apply To Long-Wave Infrared Uncooled Detector

LIR100F1.0-640-17

焦距	Focal Length	100mm
光圈	F/#	1.0
视场角	Circular FOV	6.2° (H) X 4.6° (V)
工作波段	Spectral Range	8-12um
调焦方式	Focus Type	Motorized
后工作距离	BFL	16mm
接口类型	Mount Type	M45X1
探测器	Detector	640X480-17um

Apply To Long-Wave Infrared Uncooled Detector

LIR150F1.0-640-17

焦距	Focal Length	150mm
光圈	F/#	1.0
视场角	Circular FOV	4.1° (H) X 3.1° (V)
工作波段	Spectral Range	8-12um
调焦方式	Focus Type	Motorized
后工作距离	BFL	20mm
接口类型	Mount Type	M60X1
探测器	Detector	640X480-17um

长波红外-瞄准镜

Apply To Long-Wave Infrared Uncooled Detector

LIR01911640-17

焦距	Focal Length	19mm
光圈	F/#	1.1
视场角	Circular FOV	34.9° (H) X24.2° (V)
工作波段	Spectral Range	8-12um
调焦方式	Focus Type	Manual Focus
后工作距离	BFL	18mm
接口类型	Mount Type	M45X1
探测器	Detector	640X480-17um



Apply To Long-Wave Infrared Uncooled Detector

LIR02511640-17

焦距	Focal Length	25mm
光圈	F/#	1.1
视场角	Circular FOV	24.5° (H) X18.5° (V)
工作波段	Spectral Range	8-12um
调焦方式	Focus Type	Manual Focus
后工作距离	BFL	18mm
接口类型	Mount Type	M45X1
探测器	Detector	640X480-17um



长波红外-瞄准镜

Apply To Long-Wave Infrared Uncooled Detector

LIR02510640-17

焦距	Focal Length	25mm
光圈	F/#	1.0
视场角	Circular FOV	24.5° (H) X 18.5° (V)
工作波段	Spectral Range	8-12um
调焦方式	Focus Type	Manual Focus
后工作距离	BFL	13.3mm/17.84mm
接口类型	Mount Type	M34X0.75/M38X1
探测器	Detector	640X480-17um



LONG WAVE INFRARED

30

Apply To Long-Wave Infrared Uncooled Detector

LIR035F1.1-384-17

焦距	Focal Length	35mm
光圈	F/#	1.0
视场角	Circular FOV	10.5° (H) X 8° (V)
工作波段	Spectral Range	8-12um
调焦方式	Focus Type	Manual Focus
后工作距离	BFL	13.3mm
接口类型	Mount Type	fange
探测器	Detector	640X480-17um

ofid

www.wave-optics.com

长波红外-瞄准镜



Apply To Long-Wave Infrared Uncooled Detector

LIRO35F1.0-640-12

焦距	Focal Length	35mm
光圈	F/#	1.0
视场角	Circular FOV	12.5° (H) X10° (V)
工作波段	Spectral Range	8-12um
调焦方式	Focus Type	Manual Focus
后工作距离	BFL	13.3mm
接口类型	Mount Type	fange
探测器	Detector	640X480-12um

Apply To Long-Wave Infrared Uncooled Detector

LIRO38F1.3-640-17



焦距	Focal Length	38mm
光圈	F/#	1.3
视场角	Circular FOV	16° (H) X12° (V)
工作波段	Spectral Range	8-12um
调焦方式	Focus Type	Manual Focus
后工作距离	BFL	16.99mm
接口类型	Mount Type	M26X0.75
探测器	Detector	640X480-17um

长波红外-瞄准镜

Apply To Long-Wave Infrared Uncooled Detector

LIR040F1.0-384-17

焦距	Focal Length	40mm
光圈	F/#	1.0
视场角	Circular FOV	15.4° (H) X11.6° (V)
工作波段	Spectral Range	8-12um
调焦方式	Focus Type	Manual Focus
后工作距离	BFL	14mm
接口类型	Mount Type	M38X1
探测器	Detector	384X288-17um

Apply To Long-Wave Infrared Uncooled Detector

LIR050F1.1-384-17

焦距	Focal Length	50mm
光圈	F/#	1.1
视场角	Circular FOV	7.5° (H) X5.6° (V)
工作波段	Spectral Range	8-12um
调焦方式	Focus Type	Manual Focus
后工作距离	BFL	5.76mm
接口类型	Mount Type	Flange
探测器	Detector	384*288-17um



长波红外-瞄准镜

Apply To Long-Wave Infrared Uncooled Detector

LIR050F1.0-640-12

焦距	Focal Length	50mm
光圈	F/#	1.0
视场角	Circular FOV	8.8° (H) X7° (V)
工作波段	Spectral Range	8-12um
调焦方式	Focus Type	Manual Focus
后工作距离	BFL	5.95mm
接口类型	Mount Type	Flange
探测器	Detector	640*512-12um

Apply To Long-Wave Infrared Uncooled Detector

LIR050F1.2-640-17

焦距	Focal Length	50mm
光圈	F/#	1.2
视场角	Circular FOV	12.4° (H) X9.3° (V)
工作波段	Spectral Range	8-12um
调焦方式	Focus Type	Manual Focus
后工作距离	BFL	18mm
接口类型	Mount Type	M45X1
探测器	Detector	640X480-17um



长波红外-瞄准镜

Apply To Long-Wave Infrared Uncooled Detector

LIR050F1.0-640-17

焦距	Focal Length	50mm
光圈	F/#	1.0
视场角	Circular FOV	12.4° (H) X 9.3° (V)
工作波段	Spectral Range	8-12um
调焦方式	Focus Type	Manual Focus
后工作距离	BFL	17.84mm
接口类型	Mount Type	M38X1
探测器	Detector	640X480-17um



LONG WAVE INFRARED

34

Apply To Long-Wave Infrared Uncooled Detector

LIR075F1.0-384-17

焦距	Focal Length	75mm
光圈	F/#	1.0
视场角	Circular FOV	8.2° (H) X 6.2° (V)
工作波段	Spectral Range	8-12um
调焦方式	Focus Type	Manual Focus
后工作距离	BFL	14.2mm
接口类型	Mount Type	M38X1
探测器	Detector	384X288-17um

efd

www.wave-optics.com



长波红外-瞄准镜

Apply To Long-Wave Infrared Uncooled Detector

LIR075F1.0-640-17

焦距	Focal Length	75mm
光圈	F/#	1.0
视场角	Circular FOV	8.2° (H) X 6.2° (V)
工作波段	Spectral Range	8-12um
调焦方式	Focus Type	Manual Focus
后工作距离	BFL	17.84mm
接口类型	Mount Type	M38X1
探测器	Detector	640X480-17um

Apply To Long-Wave Infrared Uncooled Detector

LIR100F1.2-384-17

焦距	Focal Length	100mm
光圈	F/#	1.2
视场角	Circular FOV	6.2° (H) X 4.6° (V)
工作波段	Spectral Range	8-12um
调焦方式	Focus Type	Manual Focus
后工作距离	BFL	14.2mm
接口类型	Mount Type	M38X1
探测器	Detector	384X288-17um

长波红外-瞄准镜

Apply To Long-Wave Infrared Uncooled Detector

LIR100F1.3-640-17

焦距	Focal Length	100mm
光圈	F/#	1.3
视场角	Circular FOV	6.2° (H) X 4.6° (V)
工作波段	Spectral Range	8-12um
调焦方式	Focus Type	Manual Focus
后工作距离	BFL	18mm
接口类型	Mount Type	M45X1
探测器	Detector	640X480-17um



LONG WAVE INFRARED

36

长波红外-17um无热化镜头

Apply To Long-Wave Infrared Uncooled Detector

A-f10F1.0-240-17

焦距	Focal Length	10mm
光圈	F/#	1.0
视场角	Circular FOV	23° (H) X17.3 (V)
工作波段	Spectral Range	8-12um
调焦方式	Focus Type	Fixed Focus
后工作距离	BFL	18mm
接口类型	Mount Type	M21*0.5
探测器	Detector	240X180-17um

Apply To Long-Wave Infrared Uncooled Detector

A-f4.1F1.2-384-17

焦距	Focal Length	4.1mm
光圈	F/#	1.2
视场角	Circular FOV	90.4° (H) X67.7° (V)
工作波段	Spectral Range	8-12um
调焦方式	Focus Type	Fixed Focus
后工作距离	BFL	14mm
接口类型	Mount Type	M25*0.5
探测器	Detector	384X288-17um

长波红外-17um无热化镜头

Apply To Long-Wave Infrared Uncooled Detector

A-f4.4F1.0-384-17

焦距	Focal Length	4.4mm
光圈	F/#	1.0
视场角	Circular FOV	90° (H) X65.3° (V)
工作波段	Spectral Range	8-12um
调焦方式	Focus Type	Fixed Focus
后工作距离	BFL	14.5mm
接口类型	Mount Type	M25*0.5
探测器	Detector	384X288-17um

Apply To Long-Wave Infrared Uncooled Detector

A-f6.6F1.0-384-17

焦距	Focal Length	6.6mm
光圈	F/#	1.0
视场角	Circular FOV	50° (H) X43.8° (V)
工作波段	Spectral Range	8-12um
调焦方式	Focus Type	Fixed Focus
后工作距离	BFL	14.5mm
接口类型	Mount Type	M25*0.5
探测器	Detector	384X288-17um



长波红外-17um无热化镜头

Apply To Long-Wave Infrared Uncooled Detector

A-f7.5F1.0-384-17



焦距	Focal Length	7.5mm
光圈	F/#	1.0
视场角	Circular FOV	47° (H) X36° (V)
工作波段	Spectral Range	8-12um
调焦方式	Focus Type	Fixed Focus
后工作距离	BFL	17.7mm
接口类型	Mount Type	M24*0.5
探测器	Detector	384X288-17um

Apply To Long-Wave Infrared Uncooled Detector

A-f9F1.0-384-17



焦距	Focal Length	9mm
光圈	F/#	1.0
视场角	Circular FOV	40° (H) X30° (V)
工作波段	Spectral Range	8-12um
调焦方式	Focus Type	Fixed Focus
后工作距离	BFL	17.7mm
接口类型	Mount Type	M24*0.5
探测器	Detector	384X288-17um

长波红外-17um无热化镜头

Apply To Long-Wave Infrared Uncooled Detector

A-f10F1.0-384-17

焦距	Focal Length	10mm
光圈	F/#	1.0
视场角	Circular FOV	36° (H) X27° (V)
工作波段	Spectral Range	8-12um
调焦方式	Focus Type	Fixed Focus
后工作距离	BFL	10mm
接口类型	Mount Type	M34*0.75
探测器	Detector	384X288-17um



LONG WAVE INFRARED

40

Apply To Long-Wave Infrared Uncooled Detector

A-f12.8F1.0-384-17

焦距	Focal Length	12.8mm
光圈	F/#	1.0
视场角	Circular FOV	28° (H) X21° (V)
工作波段	Spectral Range	8-12um
调焦方式	Focus Type	Fixed Focus
后工作距离	BFL	14.5mm
接口类型	Mount Type	M25*0.5
探测器	Detector	384X288-17um



ofid

www.wave-optics.com



长波红外-17um无热化镜头

Apply To Long-Wave Infrared Uncooled Detector

A-f13F1.0-384-17

焦距	Focal Length	13mm
光圈	F/#	1.0
视场角	Circular FOV	28° (H) X21° (V)
工作波段	Spectral Range	8-12um
调焦方式	Focus Type	Fixed Focus
后工作距离	BFL	15.5mm
接口类型	Mount Type	M25*0.5
探测器	Detector	384X288-17um

Apply To Long Wave Infrared Uncooled Detector

A-f15F1.0-384-17

焦距	Focal Length	15mm
光圈	F/#	1.0
视场角	Circular FOV	24.5° (H) X18.5° (V)
工作波段	Spectral Range	8-12um
调焦方式	Focus Type	Fixed Focus
后工作距离	BFL	14.5mm
接口类型	Mount Type	M25*0.5
探测器	Detector	384X288-17um

长波红外-17um无热化镜头

Apply To Long-Wave Infrared Uncooled Detector

A-f19F1.0-384-17

焦距	Focal Length	19mm
光圈	F/#	1.0
视场角	Circular FOV	19.6° (H) X14.7° (V)
工作波段	Spectral Range	8-12um
调焦方式	Focus Type	Fixed Focus
后工作距离	BFL	15.5mm
接口类型	Mount Type	M25*0.5
探测器	Detector	384X288-17um

Apply To Long-Wave Infrared Uncooled Detector

A-f25F1.0-384-17

焦距	Focal Length	25mm
光圈	F/#	1.0
视场角	Circular FOV	14.8° (H) X11° (V)
工作波段	Spectral Range	8-12um
调焦方式	Focus Type	Fixed Focus
后工作距离	BFL	18mm
接口类型	Mount Type	M30*0.5
探测器	Detector	384X288-17um



长波红外-17um无热化镜头

Apply To Long-Wave Infrared Uncooled Detector

A-f75F1.2-384-17

焦距	Focal Length	75mm
光圈	F/#	1.2
视场角	Circular FOV	5° (H) X 3.8° (V)
工作波段	Spectral Range	8-12um
调焦方式	Focus Type	Fixed Focus
后工作距离	BFL	14.25mm
接口类型	Mount Type	M34*0.75
探测器	Detector	384X288-17um

Apply To Long-Wave Infrared Uncooled Detector

A-f6.9F1.0-640-17

焦距	Focal Length	6.9mm
光圈	F/#	1.0
视场角	Circular FOV	90° (H) X 70° (V)
工作波段	Spectral Range	8-12um
调焦方式	Focus Type	Fixed Focus
后工作距离	BFL	17.7mm
接口类型	Mount Type	M34*0.5
探测器	Detector	640X512-17um



长波红外-17um无热化镜头

Apply To Long-Wave Infrared Uncooled Detector

A-f7F1.1-640-17

焦距	Focal Length	7mm
光圈	F/#	1.1
视场角	Circular FOV	80° (H) X60° (V)
工作波段	Spectral Range	8-12um
调焦方式	Focus Type	Fixed Focus
后工作距离	BFL	16.5mm
接口类型	Mount Type	M25*0.5
探测器	Detector	640X512-17um



LONG WAVE INFRARED

44

Apply To Long-Wave Infrared Uncooled Detector

A-f8.5F1.2-640-17

焦距	Focal Length	8.5mm
光圈	F/#	1.2
视场角	Circular FOV	65° (H) X51° (V)
工作波段	Spectral Range	8-12um
调焦方式	Focus Type	Fixed Focus
后工作距离	BFL	20mm
接口类型	Mount Type	M25*0.5
探测器	Detector	640X512-17um



ofid

www.wave-optics.com

长波红外-17um无热化镜头

Apply To Long Wave Infrared Uncooled Detector

A-f9F1.0-640-17

焦距	Focal Length	9mm
光圈	F/#	1.0
视场角	Circular FOV	63.3° (H) X52° (V)
工作波段	Spectral Range	8-12um
调焦方式	Focus Type	Fixed Focus
后工作距离	BFL	14.5mm
接口类型	Mount Type	Flange
探测器	Detector	640X512-17um

Apply To Long Wave Infrared Uncooled Detector

A-f10.3F1.0-640-17

焦距	Focal Length	10.3mm
光圈	F/#	1.0
视场角	Circular FOV	60° (H) X47.7° (V)
工作波段	Spectral Range	8-12um
调焦方式	Focus Type	Fixed Focus
后工作距离	BFL	17.7mm
接口类型	Mount Type	M34*0.5
探测器	Detector	640X512-17um

长波红外-17um无热化镜头

Apply To Long-Wave Infrared Uncooled Detector

A-f13F1.0-640-17

焦距	Focal Length	13mm
光圈	F/#	1.0
视场角	Circular FOV	45.4° (H) X37° (V)
工作波段	Spectral Range	8-12um
调焦方式	Focus Type	Fixed Focus
后工作距离	BFL	16mm
接口类型	Mount Type	M25*0.5
探测器	Detector	640X512-17um



Apply To Long-Wave Infrared Uncooled Detector

A-f15F1.0-640-17

焦距	Focal Length	15mm
光圈	F/#	1.0
视场角	Circular FOV	40° (H) X32° (V)
工作波段	Spectral Range	8-12um
调焦方式	Focus Type	Fixed Focus
后工作距离	BFL	16mm
接口类型	Mount Type	M25*0.5
探测器	Detector	640X512-17um

长波红外-17um无热化镜头

Apply To Long-Wave Infrared Uncooled Detector

A-f17.8F1.0-640-17

焦距	Focal Length	17.8mm
光圈	F/#	1.0
视场角	Circular FOV	30° (H) X 27.6° (V)
工作波段	Spectral Range	8-12um
调焦方式	Focus Type	Fixed Focus
后工作距离	BFL	17.7mm
接口类型	Mount Type	M34*0.5
探测器	Detector	640X512-17um

Apply To Long-Wave Infrared Uncooled Detector

A-f19F1.0-640-17

焦距	Focal Length	19mm
光圈	F/#	1.0/1.2
视场角	Circular FOV	33° (H) X 26° (V)
工作波段	Spectral Range	8-12um
调焦方式	Focus Type	Fixed Focus
后工作距离	BFL	20mm
接口类型	Mount Type	M25*0.5
探测器	Detector	640X512-17um



长波红外-17um无热化镜头

Apply To Long-Wave Infrared Uncooled Detector

A-f20F1.0-640-17

焦距	Focal Length	20mm
光圈	F/#	1.0
视场角	Circular FOV	31° (H) X24.6° (V)
工作波段	Spectral Range	8-12um
调焦方式	Focus Type	Fixed Focus
后工作距离	BFL	16.5mm
接口类型	Mount Type	M34*0.75
探测器	Detector	640X512-17um

Apply To Long-Wave Infrared Uncooled Detector

A-f25F1.0-640-17

焦距	Focal Length	25mm
光圈	F/#	1.0/1.2
视场角	Circular FOV	24.5° (H) X19.7° (V)
工作波段	Spectral Range	8-12um
调焦方式	Focus Type	Fixed Focus
后工作距离	BFL	17.7mm
接口类型	Mount Type	M34*0.5
探测器	Detector	640X512-17um





长波红外-17um无热化镜头

Apply To Long-Wave Infrared Uncooled Detector

A-f35F1.0-640-17

焦距	Focal Length	35mm
光圈	F/#	1.0/1.2
视场角	Circular FOV	17.7° (H) X 14° (V)
工作波段	Spectral Range	8-12um
调焦方式	Focus Type	Fixed Focus
后工作距离	BFL	16mm
接口类型	Mount Type	M25*0.5
探测器	Detector	640X512-17um

Apply To Long-Wave Infrared Uncooled Detector

A-f50F1.0-640-17

焦距	Focal Length	50mm
光圈	F/#	1.0
视场角	Circular FOV	12.4° (H) X 9.3° (V)
工作波段	Spectral Range	8-12um
调焦方式	Focus Type	Fixed Focus
后工作距离	BFL	16.5mm
接口类型	Mount Type	M34*0.75
探测器	Detector	640X512-17um



长波红外-17um无热化镜头

Apply To Long-Wave Infrared Uncooled Detector

A-f60F1.0-640-17

焦距	Focal Length	60mm
光圈	F/#	1.0
视场角	Circular FOV	10.3° (H) X8.2° (V)
工作波段	Spectral Range	8-12um
调焦方式	Focus Type	Fixed Focus
后工作距离	BFL	17.7mm
接口类型	Mount Type	M34*0.5
探测器	Detector	640X512-17um



LONG WAVE INFRARED

50

Apply To Long-Wave Infrared Uncooled Detector

A-f75F1.0-640-17

焦距	Focal Length	75mm
光圈	F/#	1.0
视场角	Circular FOV	8.3° (H) X6.6° (V)
工作波段	Spectral Range	8-12um
调焦方式	Focus Type	Fixed Focus
后工作距离	BFL	13.5mm
接口类型	Mount Type	M34*0.75
探测器	Detector	640X512-17um



ofid

www.wave-optics.com



长波红外-17um无热化镜头

Apply To Long-Wave Infrared Uncooled Detector

A-f100F1.2-640-17

焦距	Focal Length	100mm
光圈	F/#	1.2
视场角	Circular FOV	6.2° (H) X 4.9° (V)
工作波段	Spectral Range	8-12um
调焦方式	Focus Type	Fixed Focus
后工作距离	BFL	13.5mm
接口类型	Mount Type	M34*0.75
探测器	Detector	640X512-17um

Apply To Long-Wave Infrared Uncooled Detector

A-f25F1.0-1024-17

焦距	Focal Length	25mm
光圈	F/#	1.0
视场角	Circular FOV	38.4° (H) X 29.3° (V)
工作波段	Spectral Range	8-12um
调焦方式	Focus Type	Manual Focus
后工作距离	BFL	16mm
接口类型	Mount Type	M45*1
探测器	Detector	640X512-17um

长波红外-12um无热化镜头

Apply to Long-Wave Infrared Uncooled Detector

A-f7.5F1.0-320-12

焦距	Focal Length	7.5mm
光圈	F/#	1.0
视场角	Circular FOV	28.7° (H) X 21.7° (V)
工作波段	Spectral Range	8-12um
调焦方式	Focus Type	Fixed Focus
后工作距离	BFL	14.5mm
接口类型	Mount Type	M18*0.5
探测器	Detector	320*240-12um

Apply to Long Wave Infrared Uncooled Detector

A-f9.7F1.0-320-12

焦距	Focal Length	9.7mm
光圈	F/#	1.0
视场角	Circular FOV	22.4° (H) X 16.8° (V)
工作波段	Spectral Range	8-12um
调焦方式	Focus Type	Fixed Focus
后工作距离	BFL	17mm
接口类型	Mount Type	M18*0.5
探测器	Detector	320*240-12um

长波红外-12um无热化镜头

Apply To Long-Wave Infrared Uncooled Detector

A-f9F1.0-384-12

焦距	Focal Length	9mm
光圈	F/#	1.0
视场角	Circular FOV	28.8° (H) X 21.8° (V)
工作波段	Spectral Range	8-12um
调焦方式	Focus Type	Fixed Focus
后工作距离	BFL	16.8mm
接口类型	Mount Type	M18*0.5
探测器	Detector	384*288-12um

Apply To Long-Wave Infrared Uncooled Detector

A-f18F1.0-384-12

焦距	Focal Length	18mm
光圈	F/#	1.0
视场角	Circular FOV	14.6° (H) X 11° (V)
工作波段	Spectral Range	8-12um
调焦方式	Focus Type	Fixed Focus
后工作距离	BFL	14.5mm
接口类型	Mount Type	M25*0.5
探测器	Detector	384*288-12um

长波红外-12um无热化镜头

Apply To Long Wave Infrared Uncooled Detector

A-f4.1F1.2-640-12

焦距	Focal Length	4.1mm
光圈	F/#	1.2
视场角	Circular FOV	100° (H) X82° (V)
工作波段	Spectral Range	8-12um
调焦方式	Focus Type	Fixed Focus
后工作距离	BFL	14mm
接口类型	Mount Type	M25*0.5
探测器	Detector	640*512-12um



LONG WAVE INFRARED

54

Apply To Long-Wave Infrared Uncooled Detector

A-f5.8F1.2-640-12

焦距	Focal Length	5.8mm
光圈	F/#	1.2
视场角	Circular FOV	80° (H) X62° (V)
工作波段	Spectral Range	8-12um
调焦方式	Focus Type	Fixed Focus
后工作距离	BFL	14mm
接口类型	Mount Type	M18*0.5
探测器	Detector	640*512-12um

ofid

www.wave-optics.com

长波红外-12um无热化镜头

Apply To Long-Wave Infrared Uncooled Detector

A-f7.1F1.0-640-12

焦距	Focal Length	7.1mm
光圈	F/#	1.0
视场角	Circular FOV	62.5° (H) X 49.6° (V)
工作波段	Spectral Range	8-12um
调焦方式	Focus Type	Fixed Focus
后工作距离	BFL	14mm
接口类型	Mount Type	M34*0.75
探测器	Detector	640*512-12um

Apply To Long-Wave Infrared Uncooled Detector

A-f9.1F1.2-640-12

焦距	Focal Length	9.1mm
光圈	F/#	1.2
视场角	Circular FOV	48° (H) X 38° (V)
工作波段	Spectral Range	8-12um
调焦方式	Focus Type	Fixed Focus
后工作距离	BFL	17.1mm
接口类型	Mount Type	M20*0.5
探测器	Detector	640*512-12um

长波红外-12um无热化镜头

Apply To Long-Wave Infrared Uncooled Detector

A-f12.3F1.0-640-12

焦距	Focal Length	12.3mm
光圈	F/#	1.0
视场角	Circular FOV	34.6° (H) X 26.3° (V)
工作波段	Spectral Range	8-12um
调焦方式	Focus Type	Fixed Focus
后工作距离	BFL	18.22mm
接口类型	Mount Type	M25*0.5
探测器	Detector	640*512-12um



LONG WAVE INFRARED

56

Apply To Long-Wave Infrared Uncooled Detector

A-f12.8F1.0-640-12

焦距	Focal Length	12.8mm
光圈	F/#	1.0
视场角	Circular FOV	33.4° (H) X 27° (V)
工作波段	Spectral Range	8-12um
调焦方式	Focus Type	Fixed Focus
后工作距离	BFL	14mm
接口类型	Mount Type	M34*0.75
探测器	Detector	640*512-12um

ofid

www.wave-optics.com

长波红外-12um无热化镜头



Apply To Long-Wave Infrared Uncooled Detector

A-f18F1.0-640-12

焦距	Focal Length	18mm
光圈	F/#	1.0
视场角	Circular FOV	24° (H) X19.3° (V)
工作波段	Spectral Range	8-12um
调焦方式	Focus Type	Fixed Focus
后工作距离	BFL	8.8mm
接口类型	Mount Type	M22*0.5
探测器	Detector	640*512-12um



Apply To Long-Wave Infrared Uncooled Detector

A-f19F1.0-640-12

焦距	Focal Length	19mm
光圈	F/#	1.0
视场角	Circular FOV	22.8° (H) X18.3° (V)
工作波段	Spectral Range	8-12um
调焦方式	Focus Type	Fixed Focus
后工作距离	BFL	13.5mm
接口类型	Mount Type	M30*0.5
探测器	Detector	640*512-12um

长波红外-12um无热化镜头

Apply To Long-Wave Infrared Uncooled Detector

A-f24F1.0-640-12

焦距	Focal Length	24mm
光圈	F/#	1.0
视场角	Circular FOV	18° (H) X14.5° (V)
工作波段	Spectral Range	8-12um
调焦方式	Focus Type	Fixed Focus
后工作距离	BFL	8.8mm
接口类型	Mount Type	M22*0.5
探测器	Detector	640*512-12um



LONG WAVE INFRARED

58

Apply To Long-Wave Infrared Uncooled Detector

A-f25F1.0-640-12

焦距	Focal Length	25mm
光圈	F/#	1.0
视场角	Circular FOV	17° (H) X14° (V)
工作波段	Spectral Range	8-12um
调焦方式	Focus Type	Fixed Focus
后工作距离	BFL	12.5mm
接口类型	Mount Type	M25*0.5
探测器	Detector	640*512-12um



ofid

www.wave-optics.com



长波红外-12um无热化镜头

Apply To Long-Wave Infrared Uncooled Detector

A-f35F1.0-640-12

焦距	Focal Length	35mm
光圈	F/#	1.0
视场角	Circular FOV	12.5° (H) X10° (V)
工作波段	Spectral Range	8-12um
调焦方式	Focus Type	Fixed Focus
后工作距离	BFL	16.5mm
接口类型	Mount Type	M25*0.5
探测器	Detector	640*512-12um

Apply To Long-Wave Infrared Uncooled Detector

A-f50F1.0-640-12

焦距	Focal Length	50mm
光圈	F/#	1.0
视场角	Circular FOV	8.8° (H) X7° (V)
工作波段	Spectral Range	8-12um
调焦方式	Focus Type	Fixed Focus
后工作距离	BFL	16.5mm
接口类型	Mount Type	M34*0.75
探测器	Detector	640*512-12um

长波红外-12um无热化镜头

Apply To Long-Wave Infrared Uncooled Detector

A-f52F1.0-640-12

焦距	Focal Length	52mm
光圈	F/#	1.0
视场角	Circular FOV	8.4° (H) X 6.7° (V)
工作波段	Spectral Range	8-12um
调焦方式	Focus Type	Fixed Focus
后工作距离	BFL	16.5mm
接口类型	Mount Type	M34*0.75
探测器	Detector	640*512-12um



LONG WAVE INFRARED

60

Apply To Long-Wave Infrared Uncooled Detector

A-f60F1.0-640-12

焦距	Focal Length	60mm
光圈	F/#	1.0
视场角	Circular FOV	7.3° (H) X 5.9° (V)
工作波段	Spectral Range	8-12um
调焦方式	Focus Type	Fixed Focus
后工作距离	BFL	17.7mm
接口类型	Mount Type	M34*0.75
探测器	Detector	640*512-12um

ofid

www.wave-optics.com

长波红外-12um无热化镜头

Apply To Long-Wave Infrared Uncooled Detector

A-f75F1.0-640-12

焦距	Focal Length	75mm
光圈	F/#	1.0
视场角	Circular FOV	5.9° (H) X4.7° (V)
工作波段	Spectral Range	8-12um
调焦方式	Focus Type	Fixed Focus
后工作距离	BFL	13.5mm
接口类型	Mount Type	M34*0.75
探测器	Detector	640*512-12um

Apply To Long-Wave Infrared Uncooled Detector

A-f100F1.2-640-12

焦距	Focal Length	75mm
光圈	F/#	1.0
视场角	Circular FOV	4.4° (H) X3.5° (V)
工作波段	Spectral Range	8-12um
调焦方式	Focus Type	Fixed Focus
后工作距离	BFL	13.5mm
接口类型	Mount Type	M34*0.75
探测器	Detector	640*512-12um

长波红外-12um无热化镜头

Apply To Long-Wave Infrared Uncooled Detector

A-f25F1.0-1280-12

焦距	Focal Length	25mm
光圈	F/#	1.0
视场角	Circular FOV	34° (H) X 27.6° (V)
工作波段	Spectral Range	8-12um
调焦方式	Focus Type	Fixed Focus
后工作距离	BFL	17.7mm
接口类型	Mount Type	M34*0.75
探测器	Detector	1280*1024-12um

Apply To Long-Wave Infrared Uncooled Detector

A-f48.2F1.0-1280-12

焦距	Focal Length	48.2mm
光圈	F/#	1.0
视场角	Circular FOV	18° (H) X 14.5° (V)
工作波段	Spectral Range	8-12um
调焦方式	Focus Type	Fixed Focus
后工作距离	BFL	45.66mm
接口类型	Mount Type	M52*0.75
探测器	Detector	1280*1024-12um

长波红外-12um无热化镜头

Apply To Long-Wave Infrared Uncooled Detector

A-f50F1.0-1280-12

焦距	Focal Length	50mm
光圈	F/#	1.0
视场角	Circular FOV	17.5° (H) X14° (V)
工作波段	Spectral Range	8-12um
调焦方式	Focus Type	Fixed Focus
后工作距离	BFL	17.7mm
接口类型	Mount Type	M45*1
探测器	Detector	1280*1024-12um

Apply To Long-Wave Infrared Uncooled Detector

A-f100F1.0-1280-12

焦距	Focal Length	100mm
光圈	F/#	1.0
视场角	Circular FOV	8.8° (H) X7° (V)
工作波段	Spectral Range	8-12um
调焦方式	Focus Type	Fixed Focus
后工作距离	BFL	18mm
接口类型	Mount Type	M45*1
探测器	Detector	1280*1024-12um

长波红外-广角镜头

Apply To Long-Wave Infrared Uncooled Detector

LIRG03.8F1.0-640-17

焦距	Focal Length	3.8mm
光圈	F/#	1.0
视场角	Circular FOV	180°(D)-Effective
工作波段	Spectral Range	8-12um
调焦方式	Focus Type	Manual Focus
后工作距离	BFL	17.6mm
接口类型	Mount Type	M34X0.5
探测器	Detector	640X480-17um



LONG WAVE INFRARED

64

Apply To Long-Wave Infrared Uncooled Detector

LIRG4.4F1.0-800-17

焦距	Focal Length	4.4mm
光圈	F/#	1.0
视场角	Circular FOV	180°(H) X 136°(V)
工作波段	Spectral Range	8-12um
调焦方式	Focus Type	Manual Focus
后工作距离	BFL	13.5mm
接口类型	Mount Type	M45X1
探测器	Detector	800X600-17um



efd

www.wave-optics.com



长波红外-广角镜头

Apply To Long-Wave Infrared Uncooled Detector

LIRG4.6F1.0-640-17

焦距	Focal Length	4.6mm
光圈	F/#	1.0
视场角	Circular FOV	120° (D) -Effective
工作波段	Spectral Range	8-12um
调焦方式	Focus Type	Manual Focus
后工作距离	BFL	17.8mm
接口类型	Mount Type	M34X0.5
探测器	Detector	640X480-17um



Apply To Long-Wave Infrared Uncooled Detector

LIRG5.5F1.0-384-17

焦距	Focal Length	5.5mm
光圈	F/#	1.0
视场角	Circular FOV	70° (D) -Effective
工作波段	Spectral Range	8-12um
调焦方式	Focus Type	Manual Focus
后工作距离	BFL	61.26mm
接口类型	Mount Type	Flange
探测器	Detector	384X288-17um

长波红外-广角镜头

Apply To Long-Wave Infrared Uncooled Detector

LIRG5.6F1.0-800-17

焦距	Focal Length	5.6mm
光圈	F/#	1.0
视场角	Circular FOV	140° (H) X 110° (V)
工作波段	Spectral Range	8-12um
调焦方式	Focus Type	Manual Focus
后工作距离	BFL	13.5mm
接口类型	Mount Type	M45X1
探测器	Detector	800X600-17um



LONG WAVE INFRARED

66

ofid

www.wave-optics.com



长波红外-模组镜头

Apply To Long-Wave Infrared Uncooled Detector

A-3.85F1.0-160-17

焦距	Focal Length	3.85mm
光圈	F/#	1.0
视场角	Circular FOV	38.9° (H) X 29.6° (V)
工作波段	Spectral Range	8-12um
调焦方式	Focus Type	Fixed
后工作距离	BFL	11.63mm
接口类型	Mount Type	M14X0.5
探测器	Detector	160*120-17um

Apply To Long-Wave Infrared Uncooled Detector

A-3.85F1.0-160-25

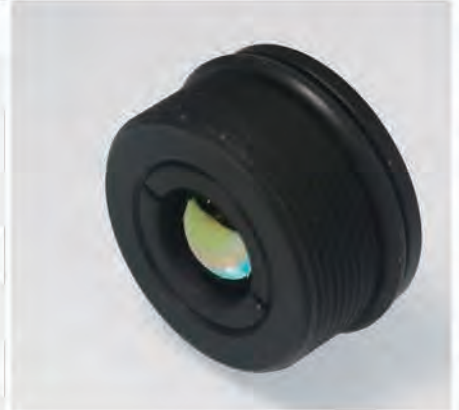
焦距	Focal Length	3.85mm
光圈	F/#	1.0
视场角	Circular FOV	60° (H) X 44° (V)
工作波段	Spectral Range	8-12um
调焦方式	Focus Type	Fixed
后工作距离	BFL	12mm
接口类型	Mount Type	M14X0.5
探测器	Detector	160*120-25um

长波红外-模组镜头

Apply To Long-Wave Infrared Uncooled Detector

A-f5.2F1.2-160-17

焦距	Focal Length	5.2mm
光圈	F/#	1.2
视场角	Circular FOV	30.4° (H) X23° (V)
工作波段	Spectral Range	8-12um
调焦方式	Focus Type	Fixed Focus
后工作距离	BFL	13.5mm
接口类型	Mount Type	M18X0.5
探测器	Detector	160X120-17um



LONG WAVE INFRARED

68

Apply To Long-Wave Infrared Uncooled Detector

A-3.2F1.0-256-12

焦距	Focal Length	3.2mm
光圈	F/#	1.0
视场角	Circular FOV	56° (H) X42° (V)
工作波段	Spectral Range	8-12um
调焦方式	Focus Type	Fixed
后工作距离	BFL	5mm
接口类型	Mount Type	M8X0.5
探测器	Detector	256*192-12um

ofid

www.wave-optics.com

长波红外-模组镜头

Apply To Long-Wave Infrared Uncooled Detector

A-f5.2F1.2-256-12(非)

焦距	Focal Length	5.2mm
光圈	F/#	1.2
视场角	Circular FOV	33.6° (H) X25.2° (V)
工作波段	Spectral Range	8-12um
调焦方式	Focus Type	Fixed Focus
后工作距离	BFL	4mm
接口类型	Mount Type	M10X0.5
探测器	Detector	256*192-12um

Apply To Long-Wave Infrared Uncooled Detector

A-f6.8F1.0-256-12

焦距	Focal Length	6.8mm
光圈	F/#	1.0
视场角	Circular FOV	32.3° (H) X25.7° (V)
工作波段	Spectral Range	8-12um
调焦方式	Focus Type	Fixed Focus
后工作距离	BFL	10.7mm
接口类型	Mount Type	M20X0.5
探测器	Detector	256*192-12um

连续变焦镜头

LZIR25-75-640-17

Optical				
Focal Length	25mm		75mm	
F#	1.2			
Spectral Range	8-12um			
FOV	384X288-17U	640X480-17U	384X288-17U	640X480-17U
HFOV	15°	25°	5°	8.3°
VFOV	11.4°	20°	3.8°	6.6°
Average Transmission	>82% for DLC coating ; ≥85% for HD coating			
Back Working Distance	8.75mm in air			
Back Focal Length	26.8mm in air			
Distortion	≤4.7%		≤1%	
Minimum Focusing Range	1m		3m	
Coating	DLC/HD			

Mechanical	
MAX.Dimensions	n120mm X 125mm
Focus Mechanism	Motorized Adjustable
Focus Time (minimum range to ∞)	≤4sec
Zoom Mechanism	Motorized Adjustable
Zoom Time (MAX.)	≤8sec
Mount	Flange
IP Degree	IP 67 For The First Lens
Weight	≤1.2kg

Electrical	
Lens Control	Designated Lens Controller
Drive Voltage	12VDC
Current Consumption	0.3A Average ; 0.8A Peak
Communication interface	RS422
Communication Protocol	Document Upon Request

Environmental	
Operation Temperature	-40°C to +80°C
Storage Temperature	-50°C to +85°C

连续变焦镜头



LZIR30-150-640-17

Optical				
Focal Length	30mm		150mm	
F#	0.85		1.2	
Spectral Range	8-12um			
FOV	384X288-17U	640X480-17U	384X288-17U	640X480-17U
HFOV	12.4°	20.5°	2.5°	4.1°
VFOV	9.3°	15.5°	1.8°	3.1°
Average Transmission	≥75% for DLC coating ; ≥81% for HD coating			
Back Working Distance	20mm in air			
Back Focal Length	31.41mm in air			
Distortion	≤2.5%		≤1.5%	
Minimum Focusing Range	0.5m		13m	
Coating	DLC/HD			

Mechanical	
MAX.Dimensions	n183mm X 213.2mm
Focus Mechanism	Motorized Adjustable
Focus Time (minimum range to ∞)	≤4sec
Zoom Mechanism	Motorized Adjustable
Zoom Time (MAX.)	≤8sec
Mount	Flange
IP Degree	IP 67 For The First Lens
Weight	≤3.2kg

Electrical	
Lens Control	Designated Lens Controller
Drive Voltage	12VDC
Current Consumption	0.3A Average ; 0.8A Peak
Communication interface	RS422
Communication Protocol	Document Upon Request

Environmental	
Operation Temperature	-40°C to +80°C
Storage Temperature	-50°C to +85°C

连续变焦镜头

LZIR25-225-640-17

Electrical	
Lens Control	Designated Lens Controller
Drive Voltage	12VDC
Current Consumption	0.3A Average ; 0.8A Peak
Communication interface	RS422
Communication Protocol	Document Upon Request
Environmental	
Operation Temperature	-35°C to +80°C
Storage Temperature	-50°C to +85°C
Mechanical	
MAX.Dimensions	n207mm X 244.17mm
Focus Mechanism	Motorized Adjustable
Focus Time (minimum range to ∞)	≤4sec
Zoom Mechanism	Motorized Adjustable
Zoom Time (MAX.)	≤8sec
Mount	Flange
IP Degree	IP 67 For The First Lens
Weight	≤3.9kg
Electrical	
Lens Control	Designated Lens Controller
Drive Voltage	12VDC
Current Consumption	0.3A Average ; 0.8A Peak
Communication interface	RS422
Communication Protocol	Document Upon Request
Environmental	
Operation Temperature	-40°C to +80°C
Storage Temperature	-50°C to +85°C

连续变焦镜头

MZIR30-300-640-17

Optical				
Focal Length	30mm		300mm	
F#	4			
Spectral Range	3.7um-4.8um			
FOV	320x256-30um	640X512-15um	320x256-30um	640X512-15um
HFOV	18.1°	18.1°	1.8°	1.8°
VFOV	14.5°	14.5°	1.4°	1.4°
Average Transmission	≥80% for DLC coating ; ≥87% for AR coating			
Back Working Distance	7.1mm in air			
Back Focal Length	30.47mm in air			
Distortion	≤2%		≤4%	
Minimum Focusing Range	10m		40m	
Coating	DLC/AR			
Mechanical				
MAX.Dimensions	n108mm X 139mm			
Focus Mechanism	Motorized Adjustable			
Focus Time (minimum range to ∞)	≤3sec			
Zoom Mechanism	Motorized Adjustable			
Zoom Time (MAX.)	≤6sec			
Mount	Flange			
IP Degree	IP 67 For The First Lens			
Weight	≤1.3kg			
Electrical				
Lens Control	Designated Lens Controller			
Drive Voltage	12VDC			
Current Consumption	0.3A Average ; 0.8A Peak			
Communication interface	RS422			
Communication Protocol	Document Upon Request			
Environmental				
Operation Temperature	-35°C to +80°C			
Storage Temperature	-50°C to +85°C			